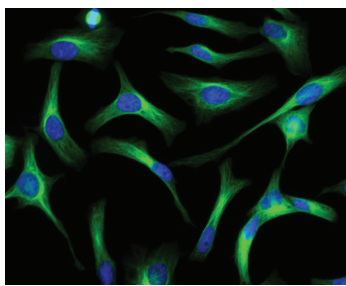
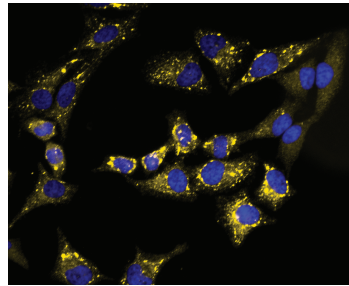


- Fluorescent secondary antibodies: Goat anti-mouse, -rabbit, -rat IgG; Rabbit anti-goat IgG
- Conjugated with a variety of fluorophores: FSD Fluor, Flamma Fluor, ICG and HRP
- Superior to most commercial fluorescent secondary antibodies
- Suitable for a wide range of biological applications: fluorescence microscopy, flow cytometry, microplate assays, in situ hybridization, etc.

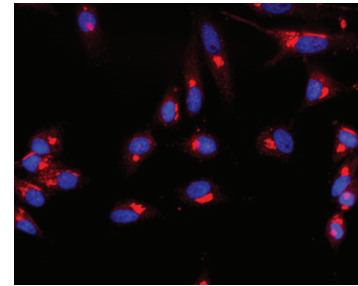
Immunofluorescence Imaging of Cell Organelles



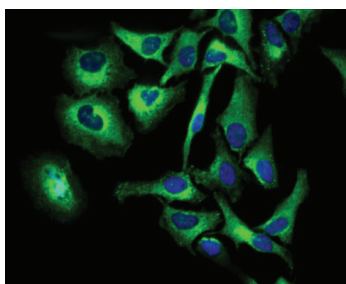
Tubulin
(1' Ab: a-tubulin antibody)



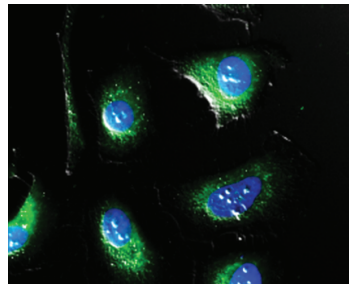
Mitochondria
(1' Ab: Cox4 antibody)



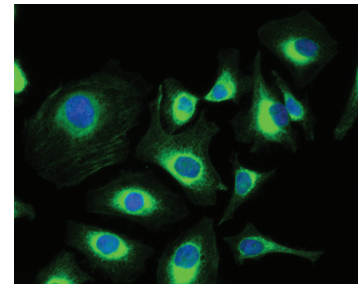
Golgi body
(1' Ab: Golgin-97 antibody)



Autophagosome
(1'Ab: LC3B antibody)



Peroxisome
(1' Ab: PMP70 antibody)



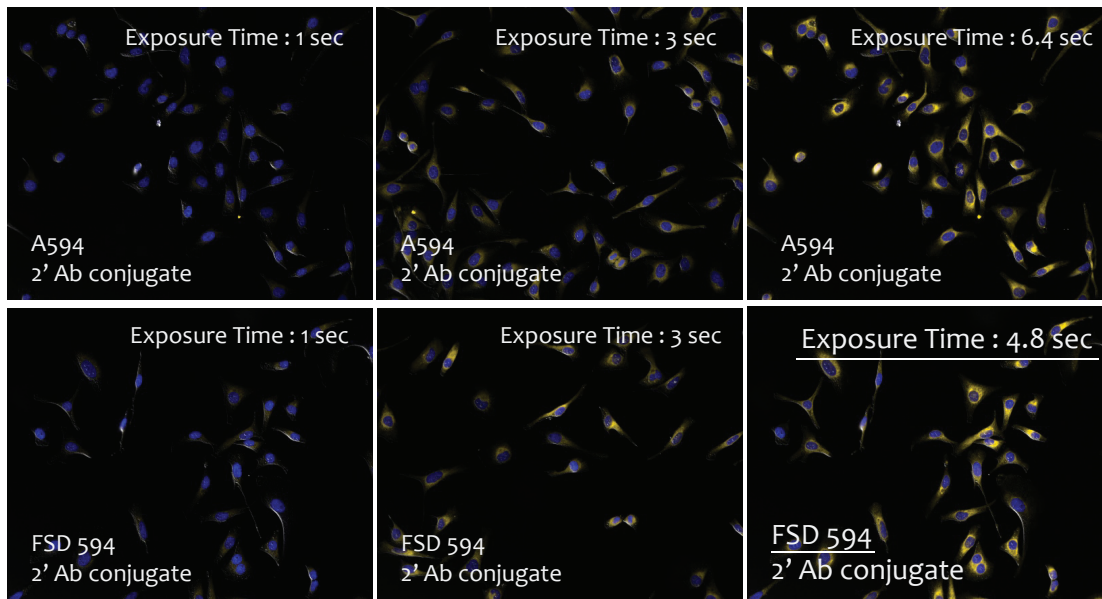
Endoplasmic Reticulum
(1' Ab: PDI antibody)

Flamma Fluor-conjugated Fluorescent Secondary Antibody List

Host	Target	Fluorephore	Cat. No.	Emission color	Ex _{Max} (nm)	Em _{Max} (nm)	Application	Packing Size		
Goat	anti-Mouse IgG	Flamma 488	RSA1141	Green	495	519	FACS, ICC, IF, IHC, IP, WB	0.5mg, 1mg, 2mg		
		Flamma 552	RSA1151	Yellow	550	565	FACS, ICC, IF, IHC, IP, WB	0.5mg, 1mg, 2mg		
		Flamma 594	RSA1191	Red	590	617	FACS, ICC, IF, IHC, IP, WB	0.5mg, 1mg, 2mg		
		Flamma 648	RSA1161	Red	648	665	FACS, ICC, IF, IHC, IP, WB	0.5mg, 1mg, 2mg		
		Flamma 675	RSA1171	Far red	675	698	FACS, ICC, IF, IHC, IP, WB	0.5mg, 1mg, 2mg		
		Flamma 749	RSA1101	NIR	750	782	FACS, ICC, IF, IHC, IP, WB	0.5mg, 1mg, 2mg		
		Flamma ICG	RSA1181	NIR	785	821	FACS, ICC, IF, IHC, IP, WB	0.5mg, 1mg, 2mg		
		HRP	RSA1122	-	-	-	FACS, ICC, IF, IHC, IP, WB	0.5mg, 1mg, 2mg		
		Flamma 488	RSA1241	Green	494	523	FACS, ICC, IF, IHC, IP, WB	0.5mg, 1mg, 2mg		
		Flamma 552	RSA1251	Yellow	550	565	FACS, ICC, IF, IHC, IP, WB	0.5mg, 1mg, 2mg		
		Flamma 594	RSA1291	Red	560	589	FACS, ICC, IF, IHC, IP, WB	0.5mg, 1mg, 2mg		
		Goat	anti-Rabbit IgG	Flamma 648	RSA1261	Red	648	665	FACS, ICC, IF, IHC, IP, WB	0.5mg, 1mg, 2mg
Flamma 675	RSA1271			Far red	675	698	FACS, ICC, IF, IHC, IP, WB	0.5mg, 1mg, 2mg		
Flamma 749	RSA1201			NIR	750	782	FACS, ICC, IF, IHC, IP, WB	0.5mg, 1mg, 2mg		
Flamma ICG	RSA1281			NIR	785	821	FACS, ICC, IF, IHC, IP, WB	0.5mg, 1mg, 2mg		
HRP	RSA1221			-	-	-	ICC, IP, ELISA, IHC, WB	0.5mg, 1mg, 2mg		
Flamma 488	RSA1541			Green	495	519	FACS, ICC, IF, IHC, IP, WB	0.5mg, 1mg, 2mg		
Flamma 552	RSA1551			Yellow	550	565	FACS, ICC, IF, IHC, IP, WB	0.5mg, 1mg, 2mg		
Flamma 594	RSA1591			Red	590	617	FACS, ICC, IF, IHC, IP, WB	0.5mg, 1mg, 2mg		
Flamma 648	RSA1561			Red	648	665	FACS, ICC, IF, IHC, IP, WB	0.5mg, 1mg, 2mg		
Flamma 675	RSA1571			Far red	675	698	FACS, ICC, IF, IHC, IP, WB	0.5mg, 1mg, 2mg		
Flamma 749	RSA1501			NIR	750	782	FACS, ICC, IF, IHC, IP, WB	0.5mg, 1mg, 2mg		
Goat	anti-Rat IgG			Flamma ICG	RSA1581	NIR	785	821	FACS, ICC, IF, IHC, IP, WB	0.5mg, 1mg, 2mg
		HRP	RSA1521	-	-	-	ICC, IP, ELISA, IHC, WB	0.5mg, 1mg, 2mg		
		Flamma 488	RSA4441	Green	495	519	FACS, ICC, IF, IHC, IP, WB	0.5mg, 1mg, 2mg		
		Flamma 552	RSA4451	Yellow	550	565	FACS, ICC, IF, IHC, IP, WB	0.5mg, 1mg, 2mg		
		Flamma 594	RSA4491	Red	590	617	FACS, ICC, IF, IHC, IP, WB	0.5mg, 1mg, 2mg		
		Flamma 648	RSA4461	Red	648	665	FACS, ICC, IF, IHC, IP, WB	0.5mg, 1mg, 2mg		
		Flamma 675	RSA4471	Far red	675	698	FACS, ICC, IF, IHC, IP, WB	0.5mg, 1mg, 2mg		
		Flamma 749	RSA4401	NIR	750	782	FACS, ICC, IF, IHC, IP, WB	0.5mg, 1mg, 2mg		
		Flamma ICG	RSA4481	NIR	785	821	FACS, ICC, IF, IHC, IP, WB	0.5mg, 1mg, 2mg		
		HRP	RSA4421	-	-	-	ICC, IP, ELISA, IHC, WB	0.5mg, 1mg, 2mg		
		Rabbit	anti-Goat IgG	Flamma 488	RSA4441	Green	495	519	FACS, ICC, IF, IHC, IP, WB	0.5mg, 1mg, 2mg
				Flamma 552	RSA4451	Yellow	550	565	FACS, ICC, IF, IHC, IP, WB	0.5mg, 1mg, 2mg
Flamma 594	RSA4491			Red	590	617	FACS, ICC, IF, IHC, IP, WB	0.5mg, 1mg, 2mg		
Flamma 648	RSA4461			Red	648	665	FACS, ICC, IF, IHC, IP, WB	0.5mg, 1mg, 2mg		
Flamma 675	RSA4471			Far red	675	698	FACS, ICC, IF, IHC, IP, WB	0.5mg, 1mg, 2mg		
Flamma 749	RSA4401			NIR	750	782	FACS, ICC, IF, IHC, IP, WB	0.5mg, 1mg, 2mg		
Flamma ICG	RSA4481			NIR	785	821	FACS, ICC, IF, IHC, IP, WB	0.5mg, 1mg, 2mg		
HRP	RSA4421			-	-	-	ICC, IP, ELISA, IHC, WB	0.5mg, 1mg, 2mg		

- Excellent fluorescence outputs & photostability
- Bright signal, multiplexing capabilities & ease to use
- Specific for wide range of targets and host species

Immunofluorescence comparison of dye-antibody conjugates



FSD Fluor-conjugated Fluorescent Secondary Antibody List

Host	Target	Fluorephore	Cat. No.	Emission Color	EX _{Max} (nm)	EM _{Max} (nm)	Application	Packing Size	
anti-Mouse IgG	FSD 488	Green	RSA1145	Green	495	519	FACS, ICC, IF, IHC, IP, WB	0.5mg, 1mg, 2mg	
	FSD 555	Yellow	RSA1155	Yellow	554	565	FACS, ICC, IF, IHC, IP, WB	0.5mg, 1mg, 2mg	
	FSD 594	Red	RSA1195	Red	591	617	FACS, ICC, IF, IHC, IP, WB	0.5mg, 1mg, 2mg	
	FSD 647	Red	RSA1165	Red	650	667	FACS, ICC, IF, IHC, IP, WB	0.5mg, 1mg, 2mg	
	FSD 680	Far red	RSA1175	Far red	676	694	FACS, ICC, IF, IHC, IP, WB	0.5mg, 1mg, 2mg	
	FSD 750	NIR	RSA1105	NIR	750	773	FACS, ICC, IF, IHC, IP, WB	0.5mg, 1mg, 2mg	
	FSD 800	NIR	RSA1185	NIR	774	790	FACS, ICC, IF, IHC, IP, WB	0.5mg, 1mg, 2mg	
	FSD 488	Green	RSA1245	Green	495	519	FACS, ICC, IF, IHC, IP, WB	0.5mg, 1mg, 2mg	
	FSD 555	Yellow	RSA1255	Yellow	554	565	FACS, ICC, IF, IHC, IP, WB	0.5mg, 1mg, 2mg	
	FSD 594	Red	RSA1295	Red	591	617	FACS, ICC, IF, IHC, IP, WB	0.5mg, 1mg, 2mg	
anti-Rabbit IgG	FSD 647	Red	RSA1265	Red	650	667	FACS, ICC, IF, IHC, IP, WB	0.5mg, 1mg, 2mg	
	FSD 680	Far red	RSA1275	Far red	676	694	FACS, ICC, IF, IHC, IP, WB	0.5mg, 1mg, 2mg	
	FSD 750	NIR	RSA1205	NIR	750	773	FACS, ICC, IF, IHC, IP, WB	0.5mg, 1mg, 2mg	
	FSD 800	NIR	RSA1285	NIR	774	790	FACS, ICC, IF, IHC, IP, WB	0.5mg, 1mg, 2mg	
	FSD 488	Green	RSA1545	Green	495	519	FACS, ICC, IF, IHC, IP, WB	0.5mg, 1mg, 2mg	
	FSD 555	Yellow	RSA1555	Yellow	554	565	FACS, ICC, IF, IHC, IP, WB	0.5mg, 1mg, 2mg	
	FSD 594	Red	RSA1595	Red	591	617	FACS, ICC, IF, IHC, IP, WB	0.5mg, 1mg, 2mg	
	FSD 647	Red	RSA1565	Red	650	667	FACS, ICC, IF, IHC, IP, WB	0.5mg, 1mg, 2mg	
	FSD 680	Far red	RSA1575	Far red	676	694	FACS, ICC, IF, IHC, IP, WB	0.5mg, 1mg, 2mg	
	FSD 750	NIR	RSA1505	NIR	750	773	FACS, ICC, IF, IHC, IP, WB	0.5mg, 1mg, 2mg	
anti-Rat IgG	FSD 800	NIR	RSA1585	NIR	774	790	FACS, ICC, IF, IHC, IP, WB	0.5mg, 1mg, 2mg	
	FSD 488	Green	RSA4445	Green	495	519	FACS, ICC, IF, IHC, IP, WB	0.5mg, 1mg, 2mg	
	FSD 555	Yellow	RSA4455	Yellow	554	565	FACS, ICC, IF, IHC, IP, WB	0.5mg, 1mg, 2mg	
	FSD 594	Red	RSA4495	Red	591	617	FACS, ICC, IF, IHC, IP, WB	0.5mg, 1mg, 2mg	
	FSD 647	Red	RSA4465	Red	650	667	FACS, ICC, IF, IHC, IP, WB	0.5mg, 1mg, 2mg	
	FSD 680	Far red	RSA4475	Far red	676	694	FACS, ICC, IF, IHC, IP, WB	0.5mg, 1mg, 2mg	
	FSD 750	NIR	RSA4405	NIR	750	773	FACS, ICC, IF, IHC, IP, WB	0.5mg, 1mg, 2mg	
	FSD 800	NIR	RSA4485	NIR	774	790	FACS, ICC, IF, IHC, IP, WB	0.5mg, 1mg, 2mg	
	anti-Goat IgG	FSD 488	Green	RSA4445	Green	495	519	FACS, ICC, IF, IHC, IP, WB	0.5mg, 1mg, 2mg
		FSD 555	Yellow	RSA4455	Yellow	554	565	FACS, ICC, IF, IHC, IP, WB	0.5mg, 1mg, 2mg
FSD 594		Red	RSA4495	Red	591	617	FACS, ICC, IF, IHC, IP, WB	0.5mg, 1mg, 2mg	
FSD 647		Red	RSA4465	Red	650	667	FACS, ICC, IF, IHC, IP, WB	0.5mg, 1mg, 2mg	
FSD 680		Far red	RSA4475	Far red	676	694	FACS, ICC, IF, IHC, IP, WB	0.5mg, 1mg, 2mg	
FSD 750		NIR	RSA4405	NIR	750	773	FACS, ICC, IF, IHC, IP, WB	0.5mg, 1mg, 2mg	
FSD 800		NIR	RSA4485	NIR	774	790	FACS, ICC, IF, IHC, IP, WB	0.5mg, 1mg, 2mg	
anti-Rabbit IgG		FSD 488	Green	RSA4445	Green	495	519	FACS, ICC, IF, IHC, IP, WB	0.5mg, 1mg, 2mg
		FSD 555	Yellow	RSA4455	Yellow	554	565	FACS, ICC, IF, IHC, IP, WB	0.5mg, 1mg, 2mg
		FSD 594	Red	RSA4495	Red	591	617	FACS, ICC, IF, IHC, IP, WB	0.5mg, 1mg, 2mg
	FSD 647	Red	RSA4465	Red	650	667	FACS, ICC, IF, IHC, IP, WB	0.5mg, 1mg, 2mg	
	FSD 680	Far red	RSA4475	Far red	676	694	FACS, ICC, IF, IHC, IP, WB	0.5mg, 1mg, 2mg	
	FSD 750	NIR	RSA4405	NIR	750	773	FACS, ICC, IF, IHC, IP, WB	0.5mg, 1mg, 2mg	
	FSD 800	NIR	RSA4485	NIR	774	790	FACS, ICC, IF, IHC, IP, WB	0.5mg, 1mg, 2mg	
	anti-Mouse IgG	FSD 488	Green	RSA1145	Green	495	519	FACS, ICC, IF, IHC, IP, WB	0.5mg, 1mg, 2mg
		FSD 555	Yellow	RSA1155	Yellow	554	565	FACS, ICC, IF, IHC, IP, WB	0.5mg, 1mg, 2mg
		FSD 594	Red	RSA1195	Red	591	617	FACS, ICC, IF, IHC, IP, WB	0.5mg, 1mg, 2mg
FSD 647		Red	RSA1165	Red	650	667	FACS, ICC, IF, IHC, IP, WB	0.5mg, 1mg, 2mg	
FSD 680		Far red	RSA1175	Far red	676	694	FACS, ICC, IF, IHC, IP, WB	0.5mg, 1mg, 2mg	
FSD 750		NIR	RSA1105	NIR	750	773	FACS, ICC, IF, IHC, IP, WB	0.5mg, 1mg, 2mg	
FSD 800		NIR	RSA1185	NIR	774	790	FACS, ICC, IF, IHC, IP, WB	0.5mg, 1mg, 2mg	
FSD 488		Green	RSA1245	Green	495	519	FACS, ICC, IF, IHC, IP, WB	0.5mg, 1mg, 2mg	
FSD 555		Yellow	RSA1255	Yellow	554	565	FACS, ICC, IF, IHC, IP, WB	0.5mg, 1mg, 2mg	
FSD 594		Red	RSA1295	Red	591	617	FACS, ICC, IF, IHC, IP, WB	0.5mg, 1mg, 2mg	

Headquarter
 ADDRESS: 9, Cheongneung-daero 595beon-gil,
 Namdong-gu, Incheon 21666, Korea
 WEBSITE : www.bioacts.com
 PHONE : +82-32-818-9100
 FAX : +82-32-818-8206

MAILS
 ORDER SUPPORT: order@bioacts.com
 CUSTOMER SUPPORT: support@bioacts.com
 B2B/BULK ORDER SUPPORT: ivd@bioacts.com

www.bioacts.com