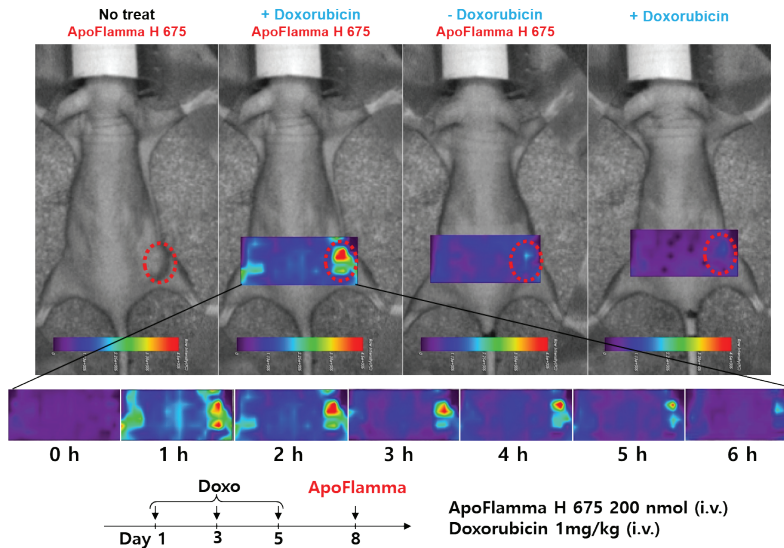


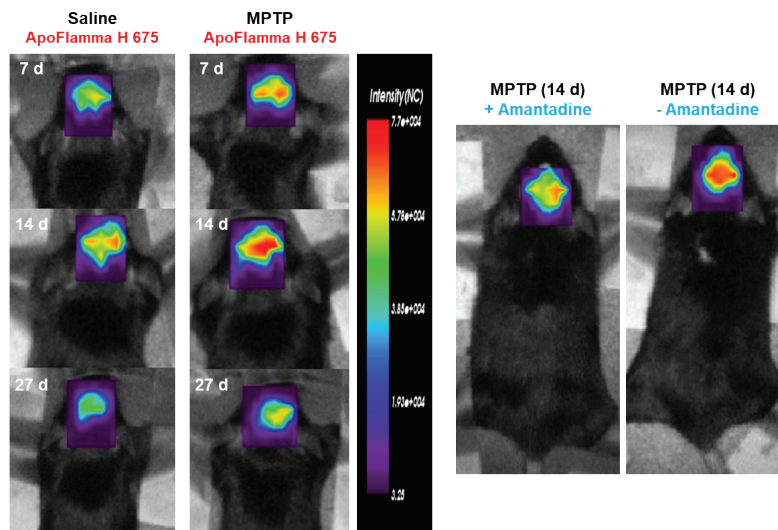
ApoFlamma[®] H series

Histone H1 binding probe for apoptosis analysis

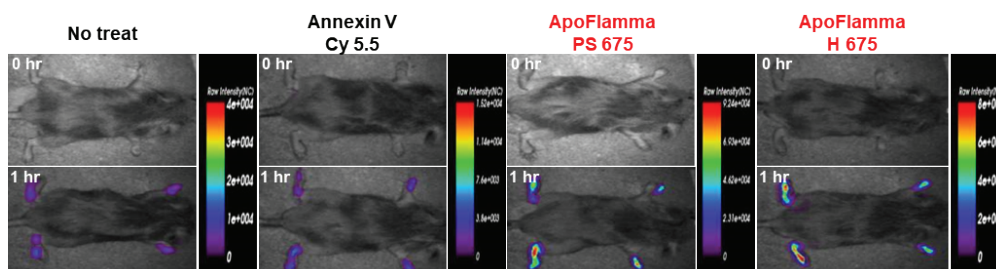
- Small peptide conjugated fluorescent probe for apoptosis detection
- Detect histone H1 exposed on the surface of apoptotic cells
- Ideal fluorescent probes for both in vitro and in vivo apoptosis imaging
- Strongly binds to apoptotic cells but weakly binds to live cells



NIR imagings of apoptosis process of drug-treated tumor cells using ApoFlamma



NIR imagings of apoptosis process of Parkinson's disease model induced by MPTP treatment using ApoFlamma (intracranial injection)

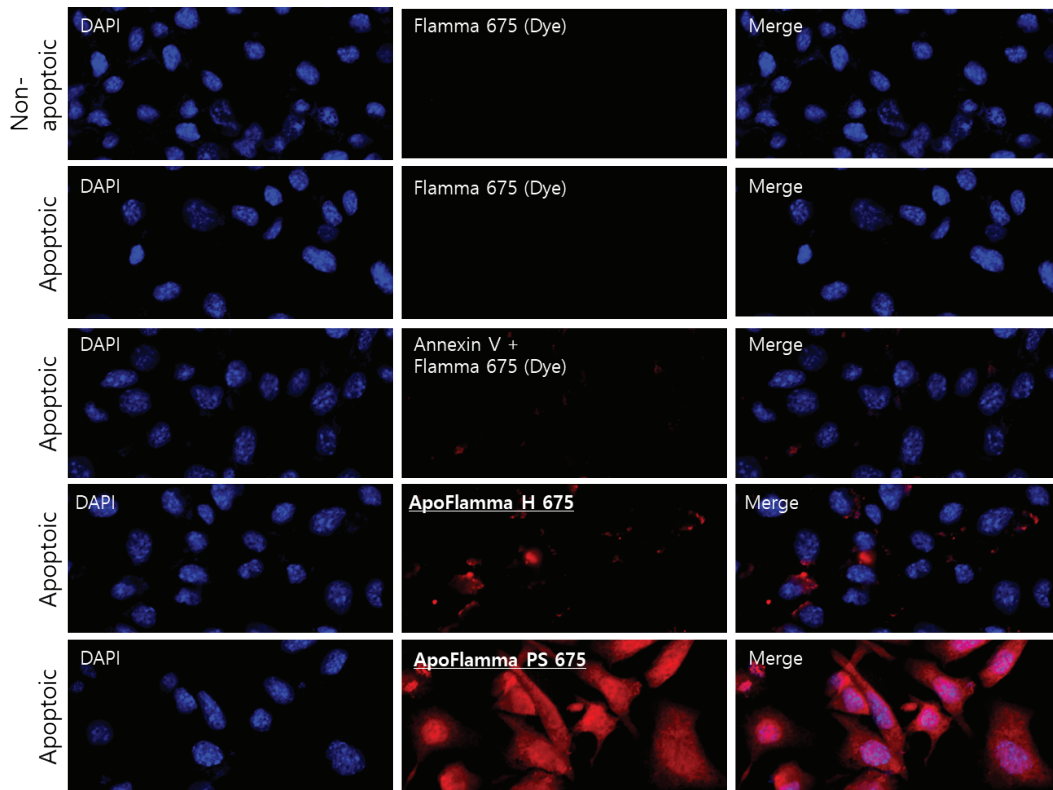


NIR Imagings of apoptosis process in rheumatoid model using ApoFlamma

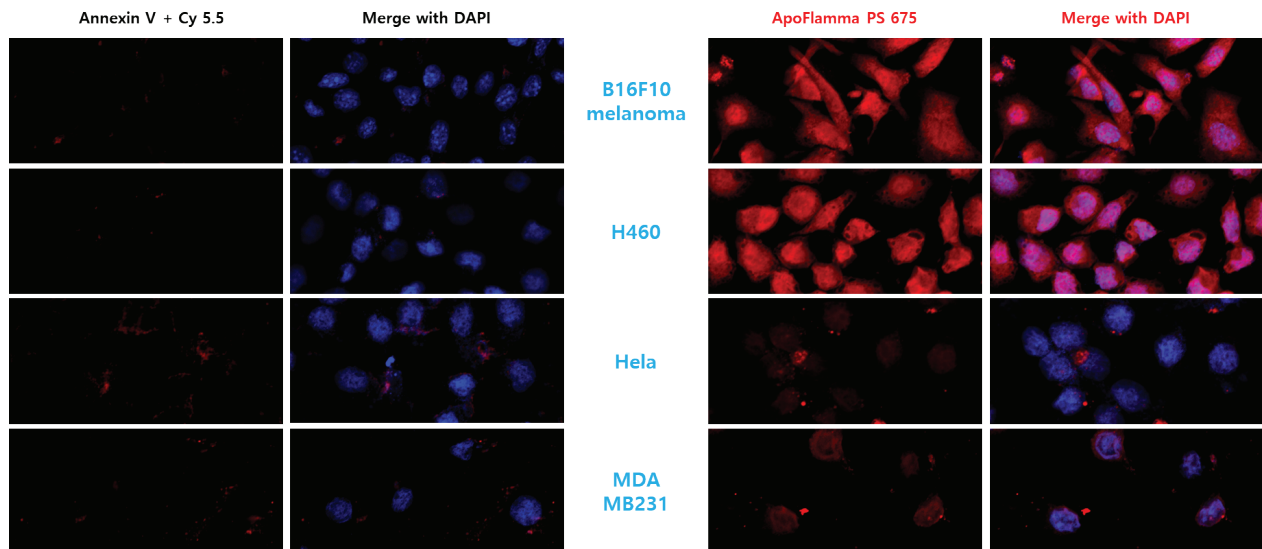
ApoFlamma[®] PS series

Versatile fluorescence probe for apoptosis analysis

- ApoFlamma PS series binds to phosphatidylserine (PS) of apoptotic cells
- PS is well-known molecular marker for analyzing apoptotic cells
- Consisting of PS recognizing peptide and various fluorophores
- Strongly bind to apoptotic cells, yet negligibly bind to other organs



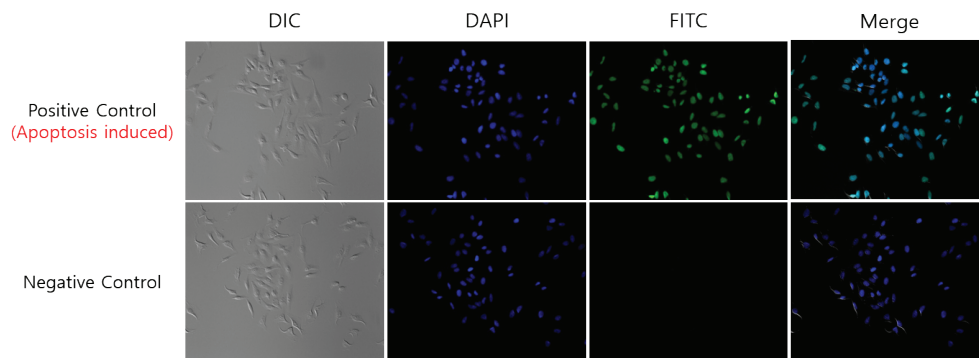
Fluorescent imagings of apoptotic cells with ApoFlamma



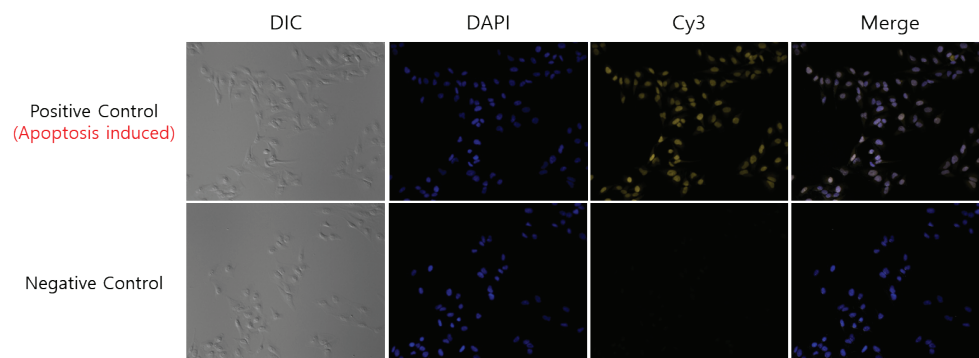
Comparative apoptosis images of (Annexin V-Cy5.5) vs. ApoFlamma 675

TUNEL Assay Kit

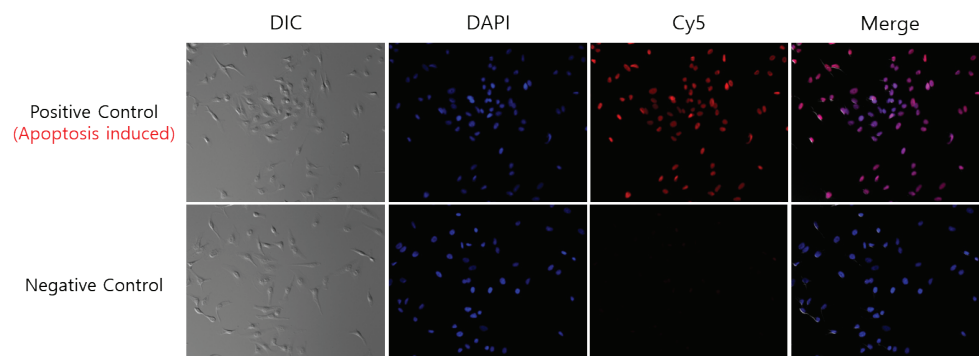
TUNEL assays are widely used methods for rapid identification and quantification of the apoptotic cell fraction in cultured cell preparations. TUNEL reaction preferentially labels DNA strands that generated during apoptosis using the ability of TdT to label blunt ends of double-stranded DNA independent of a template. BioActs developed Flamma Fluors TUNEL assay kit for quantitative analysis of apoptotic cells in the mixed cell populations. Flamma Fluor dyes display excellent fluorescence activity and photostability after conjugated to biomolecules, allowing detection of low-abundance biological structures with great sensitivity. Flamma TUNEL assay kit is reliable and effective method to detect and quantify a wide levels of apoptotic cells by fluorescence microscopy and flow cytometry.



Fluorescence imaging of apoptosis progress with Flamma FITC TUNEL kit



Fluorescence imaging of apoptosis progress with Flamma 552 TUNEL kit



Fluorescence imaging of apoptosis progress with Flamma 648 TUNEL kit

- ApoFlamma H series : histone H1 detection
- ApoFlamma PS series : phosphatidylserine detection
- Fluorescent Annexin V : phosphatidylserine detection
- TUNEL Assay kit : apoptotic DNA detection

ApoFlamma H & PS series for in vitro analysis

Cat. No.	Product name	Emission color	Ex _{max} (nm)	Em _{max} (nm)	Available for	Size	Targets
AHW1025	ApoFlamma® H FAM	Green	492	519	Live cell application	25 or 100 assay	Histone-1
AHH1001	ApoFlamma® H TAMRA	Orange	543	575	Live cell application	25 or 100 assay	Histone-1
AHW1011	ApoFlamma® H 552	Yellow	550	565	Live cell application	25 or 100 assay	Histone-1
AHW1215	ApoFlamma® H 648	Red	648	663	Live cell application	25 or 100 assay	Histone-1
APW1025	ApoFlamma® PS FAM	Green	492	519	Live cell application	25 or 100 assay	Phosphatidyl serine
APP1001	ApoFlamma® PS TAMRA	Orange	543	575	Live cell application	25 or 100 assay	Phosphatidyl serine
APW1011	ApoFlamma® PS 552	Yellow	550	565	Live cell application	25 or 100 assay	Phosphatidyl serine
APW1215	ApoFlamma® PS 648	Red	648	663	Live cell application	25 or 100 assay	Phosphatidyl serine

ApoFlamma H & PS series for in vivo imaging

Cat. No.	Product name	Emission Color	Ex _{max} (nm)	Em _{max} (nm)	Common filter set	Excitation laser	Packing unit
APW1501	ApoFlamma® PS 675	Far red	675	698	Cy 5.5	633, 680 nm	10, 50, 200 doses
APW1301	ApoFlamma® PS 749	NIR	750	782	Cy 7	680 nm	10, 50, 200 doses
APW1601	ApoFlamma® PS 774	NIR	777	802	Cy 7.5	785 nm	10, 50, 200 doses
APO1601	ApoFlamma® PS ICG	NIR	785	821	Cy 7.5	785 nm	10, 50, 200 doses
AHW1501	ApoFlamma® H 675	Far red	675	698	Cy 5.5	633, 680 nm	10, 50, 200 doses
AHW1301	ApoFlamma® H 749	NIR	750	782	Cy 7	680 nm	10, 50, 200 doses
AHW1601	ApoFlamma® H 774	NIR	777	802	Cy 7.5	785 nm	10, 50, 200 doses
AHO1601	ApoFlamma® H ICG	NIR	785	821	Cy 7.5	785 nm	10, 50, 200 doses

Fluorescent Annexin V series

Cat. No.	Product name	Emission color	Ex _{max} (nm)	Em _{max} (nm)	Packing unit
XAP2102	Annexin V-FITC	Green	492	519	50, 250 or 1000 assay
XAP2202	Annexin V-Flamma® 488	Green	495	519	50, 250 or 1000 assay
XAP2302	Annexin V Flamma® 552	Yellow	550	565	50, 250 or 1000 assay
XAP2802	Annexin V Flamma® TAMRA	Yellow	543	575	50, 250 or 1000 assay
XAP2902	Annexin V-Flamma® 560	Yellow	560	589	50, 250 or 1000 assay
XAP2402	Annexin V Flamma® 648	Red	648	663	50, 250 or 1000 assay
XAP2022	Annexin V Flamma® 675	Far Red	675	691	50, 250 or 1000 assay
XAP2032	Annexin V Flamma® 749	NIR	749	774	50, 250 or 1000 assay
XAP2042	Annexin V Flamma® 774	NIR	774	806	50, 250 or 1000 assay
XAP2052	Annexin V Flamma® ICG	NIR	785	821	50, 250 or 1000 assay

TUNEL assay kit

Cat. No.	Product name	Emission color	Ex _{max} (nm)	Em _{max} (nm)	Available for	Packing unit
XTN1101	FITC TUNEL assay kit	Green	495	522	Fixed cell analysis	50, 100, 200 assay
XTN1401	Flamma® 488 TUNEL assay kit	Green	496	519	Fixed cell analysis	50, 100, 200 assay
XTN1201	Flamma® 552 TUNEL assay kit	Yellow	550	565	Fixed cell analysis	50, 100, 200 assay
XTN1301	Flamma® 648 TUNEL assay kit	Red	648	665	Fixed cell analysis	50, 100, 200 assay

Headquarter

ADDRESS: 9, Cheongneung-daero 595beon-gil,
Namdong-gu, Incheon 21666, Korea

WEBSITE : www.bioacts.com

PHONE : +82-32-818-9100

FAX : +82-32-818-8206

MAILS

ORDER SUPPORT: order@bioacts.com

CUSTOMER SUPPORT: support@bioacts.com

B2B/BULK ORDER SUPPORT: ivd@bioacts.com

www.bioacts.com